

2010-2011 School Profile

Dedham High School

(781) 326-4773 Main Office
 (781) 326-8126 Main Office FAX

June M. Doe
 Superintendent

James Forrest
 Assistant Principal

Andrea Andrew
 Guidance Counselor

140 Whiting Avenue, Dedham, MA 02026

www.dedham.k12.ma.us

CEEB Code: 220-675

Joanne McCormick
 Guidance Director

Ross Wolfson
 Guidance Counselor

Guidance (781) 326-7061
 Guidance FAX (781) 320-8920

Jacob A. Santamaria, Jr.
 Principal

John Murray
 Assistant Principal

Cynthia McGrann
 Guidance Counselor

SCHOOL

Dedham High School is a four-year comprehensive, public high school enrolling approximately 800 students in 2010-2011 including 208 seniors. Accreditation is through the New England Association of Schools and Colleges, Inc. and the Massachusetts Department of Elementary and Secondary Education. Dedham High School was ranked as the 47th Best Public High School in Massachusetts in the September 2010 edition of Boston Magazine.

Students at Dedham High School can enroll in two different levels of College Preparatory classes, as well as a variety of Honors and AP classes. The school is home to a Freshman Academy for academically accelerated 9th grade students and an in-house alternative program for at-risk students. The school also participates in the Massachusetts Math and Science Initiative to increase participation and success on AP exams.

SAT REASONING TEST SCORES

(based on College Board data stored in Naviance)

Graduating Class:		'07	'08	'09	'10
# Students		122	113	138	128
Mean Scores of all SAT Reasoning Test Takers	CR	479	512	514	508
	M	504	535	538	524
	W	482	521	511	506

POST-SECONDARY STATISTICS

(based on student-reported data in Naviance)

Class	'07	'08	'09	'10
Total Grads	172	176	180	174
4 Year College Acceptances	63%	69%	72%	68%
Total 2 & 4 Yr. Enrollment %	84%	82%	87%	90%

AP AND HONORS COURSES AVAILABLE TO THE CLASS OF 2011

Level	English	Mathematics	Social Studies	Science	Foreign Language	Computer Education	Occupational Ed./Fine Arts
AP	English 3 AP English 4 AP	Calculus AP; Statistics AP	US History 1&2 AP; Psychology AP European History AP	Biology AP; Chemistry AP; Physics AP		Computer Science AP	Studio in Art AP
Honors	English 1-4; Journalism 1-3	Geometry; Algebra 2; Advanced Math	World History 2; US History 1-2; Legal Studies; Genocidal Studies; Psychology	Biology; Chemistry; Physics; Anatomy & Physiology; Marine Sci.; Environmental/ Earth Sci.	Spanish 2-5; French 2-5; Latin 1-4	Computer Science; Computerized Accounting; Adv. Web Design	CAD 1-3; Film Studies

COMMUNITY

Dedham is a suburban town of approximately 23,000 residents and is located ten miles south of Boston proper. It was established in 1636 and is the site of the first public school in the United States as well as the Fairbanks House, the oldest wooden frame structure in North America. The local economy is supported by a variety of industries and businesses. Government is an integral part of the local economy as Dedham is the county seat for Norfolk County. The town is host to several courthouses, the Registry of Deeds, the Dedham House of Correction, and the Norfolk County Sheriff's Office.

GRADUATION REQUIREMENTS

Full year courses grant 5 credits. The minimum graduation credit requirement is **111 credits**.

Students must take the following subjects:

English - 20 credits (4 years)

Science - 15 credits (3 years)

Mathematics - 15 credits (3 years)

Social Studies (inc. 2 yrs. US History) - 15 credits (3 years)

Health - 4 credits (2 years)

Physical Education - 2 credits (4 years)

Computer Applications - 5 credits (1 year)

Foreign Language - 10 credits (2 years)

Additional Coursework – 25 credits (5 full-year classes)

Students must pass at least **25 credits during their senior year**.

Students must complete **40 hours of Community Service**.

Students must pass **MCAS Examinations in ELA, Math and Science as required by the State of Massachusetts**.

CHANGES TO THE GRADING SYSTEM

(For All Courses Beginning in Sept. 2008 and Beyond)

Beginning in September 2008, students could earn an A+ in any course in which a letter grade was given. Prior to September 2008, the highest grade a student could earn was an A. The neighboring chart shows both the old and new grading scale for Unweighted GPA for all courses beginning in September 2008 and beyond.

CLASS RANK

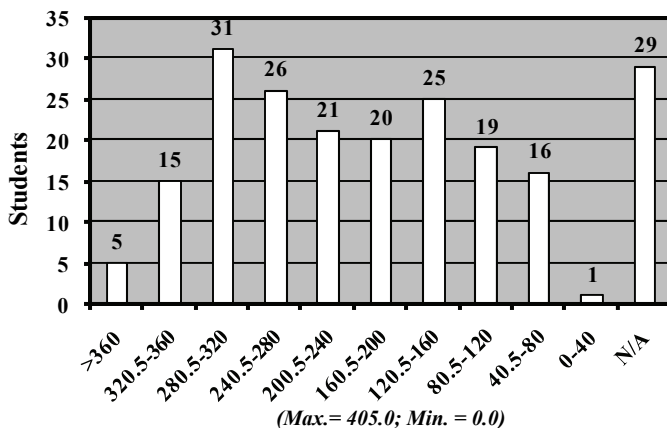
The Class of 2011 uses a Quality Point system to determine class rank. It is a weighted rank that considers the course levels and the final grades earned in courses taken at DHS. A student in the Class of 2011 could earn a maximum of 405.0 Quality Points by the end of junior year. A student may not be ranked if he or she transferred to DHS and did not complete two full years at DHS by the end of 11th grade, if the student will take more than four years to graduate, or if the student is in an out-of-district placement.

QUALITY POINT DISTRIBUTION

CLASS OF 2011

179 RANKED STUDENTS

RANGE: 40.0 - 377.5



UNWEIGHTED GPA

All Courses Through 6/08		All Courses Beginning 9/08		
GPA	Numeric Equivalent	Letter Grade	Numeric Equivalent	GPA
	N/A	A+	>96	4.3
4.0	>94	A	93-96	4.0
3.8	90-94	A -	90-92	3.7
3.7	87-89	B +	87-89	3.3
3.3	83-86	B	83-86	3.0
3.0	80-82	B -	80-82	2.7
2.7	77-79	C +	77-79	2.3
2.3	73-76	C	73-76	2.0
2.0	70-72	C -	70-72	1.7
1.7	67-69	D +	67-69	1.3
1.3	63-66	D	63-66	1.0
1.0	60-62	D -	60-62	0.7
0.0	<60	F	<60	0.0

QUALITY POINT VALUES

Grade	CP II	CP I	Honors	AP
A+	15	18	21	22.5
A	14	17	20	21.5
A-	13	16	19	20.5
B+	12	15	18	19.5
B	11	14	17	18.5
B-	10	13	16	17.5
C+	9	12	15	16.5
C	8	11	14	15.5
C-	7	10	13	14.5
D+	6	9	12	13.5
D	5	8	11	12.5
D-	4	7	10	11.5
F	0	0	0	0

(Prior to 9/08, Honors & AP classes were both weighted equally as Honors classes.)

FOUR-YEAR COLLEGE ACCEPTANCES BY RECENT GRADUATES

U of Aberdeen/U of AL/Allegheny Col./American Col. of Thessaloniki/American International Col./American U/American U of Beirut/Amherst Col./Anna Maria Col./AZ St./Assumption Col./Babson Col./Bard Col./Bates Col./Bay Path Col./Bay St. Col./Becker Col./Beloit Col./B. Franklin Institute of Tech./Bentley U/Bethune-Cookman U/Binghamton U/Boston Baptist Col./Boston Col./Boston U/Bowdoin Col./Brandeis U/U of Bridgeport/Bridgewater St. U/Bridgton Academy/BYU, Idaho/Bryant U/Cambridge Col./Cardiff U/Castleton St. Col./Catholic U of America/U of Central FL/Champlain Col./Chestnut Hill Col./Clark U/Clayton Col. & St. U/Clemson U/Colby Col./Colby-Sawyer Col./U of CO, Boulder/CO St. U/CO St. U, Pueblo/Columbia Col./Concord U/Concordia U/U of CT/U of CT, Stamford/Converse Col./Cornell U/Curry Col./Daytona St. Col./Dean Col./U of DE/Drake U/Drew U/Drexel U/Earlham Col./Eastern CT St. U/Eastern Nazarene Col./Eckerd Col./U of Edinburgh/Elmira Col./Elms Col./Elon U/Emerson Col./Emmanuel Col./Endicott Col./Fairfield U/Fisher Col./Fitchburg St. U/FL Atlantic U/FL International U/Fordham U/Framingham St. U/Franciscan U/Franklin Pierce U/George Mason U/George Washington U/U of Glasgow/Gordon Col./Green Mountain Col./Grove City Col./Hampshire Col./U of Hartford/Hartwick Col./Harvard U/Hiram Col./Hobart & William Smith/Hofstra U/Col. of the Holy Cross/Hood Col./Husson Col./Iona Col./Ithaca Col./James Madison U/Johnson & Wales U/Juniata Col./Keene St. Col./La Salle U/Lafayette Col./Lasell Col./Lebanese American U/Lehigh U/Lesley U/LIU, C.W. Post/Loyola U MD/Lyndon St. Col./Lynn U/U of ME, Farmington/U of ME, Fort Kent/U of ME, Orono/Marist Col./U of Mary Washington/U of MD, Col. Park/Marymount U/Massachusetts Col. of Art and Design/MCLA/MA Col. of Pharmacy & Health Sciences/MA Maritime Academy/UMASS Amherst/UMASS Boston/UMASS Dartmouth/UMASS Lowell/McGill U/McIntosh Col./Mercy Col./Mercyhurst Col./Merrimack Col./Miami U, OH/MN St. U, Moorhead/U of MS/Mitchell Col./Monmouth U/Montserrat Col. of Art/Mount Holyoke Col./Mount Ida Col./UNLV/New England Institute of Art/U of New England/UNH/U of New Haven/NYU/Newbury Col./Nichols Col./UNC, Chapel Hill/UNC, Charlotte/UNC, Wilmington/Northeastern U/Northern KY U/Norwich U/Notre Dame/OSU/OH U/Old Dominion U/Olivet Nazarene U/Oral Roberts U/Pace U/U of the Pacific/Penn St./Pine Manor Col./Plymouth St. U/Post U/Providence Col./Quincy Col./Quinnipiac U/Regis Col./RPI/RI Col./URI/Rider U/Rivier Col./Roanoke Col./U of Rochester/Roger Williams U/Sacred Heart U/St. Anselm Col./St. Francis U/St. Joseph Col./St. Joseph's Col.-ME/St. Joseph's U/St. Michaels Col./Salem St. U/Salve Regina U/School of the Art Institute, Chicago/Shepherd U/Siena Col./Simmons Col./Skidmore Col./Southern CT St. U/U of Southern ME/Southern NH U/Southern VT Col./Springfield Col./St. John's U/St. Mary's Col. of MD/SUNY Albany /SUNY Buffalo /Col. of Staten Island/Stonehill Col./Stony Brook U/Suffolk U/SUNY Col., Brockport/Syracuse U/The U of Tampa/Temple U/U of TN, Knoxville/Thomas Col./Tiffin U/U of Toronto/Tulane U/Union Col./Ursinus Col./UVM/Villanova U/VA Polytech./UVA/Wagner Col./Washington Col./Washington U in St. Louis/U of Waterloo/Wellesley Col./Wentworth Institute of Technology/Wesleyan U/WVU/Western Carolina U/Western St. Col. of CO/Western WA U/Westfield St. U/Wheaton Col./Wheelock Col./Col. of William & Mary/Col. of Wooster/WPI/Worcester St. U